

LED.CO.UK

THE STARK RANGE



## ABOUT US

LED.CO.UK is an International supplier of LED lighting technology. We specialise in complete energy efficient lighting solutions for both new and retrofit applications. We provide the highest quality LED based products by integrating premium components to ensure reliability and optimum performance.

Our service delivers a full bespoke package from site surveys, lighting design, the provision of leading edge technology and installation.

## **THE STARK RANGE**

At LED.CO.UK we provide a comprehensive range of lighting options for all your commercial applications each tailored to meet the operating and design parameters required.

Lighting design services are available to ensure designs meet BS EN 12464-1:2011, and Society of Light and Lighting: Code for Lighting 2012. We can also provide a cost of ownership analysis to illustrate savings which can be made versus conventional lighting.

From first point of contact to final sign off we aim to support our customers through the complete process so all details are fully dealt with to maximise performance. Within this brochure we have included our complete Stark Range of LED Downlights. To view our full range of LED products please visit [www.led.co.uk](http://www.led.co.uk).

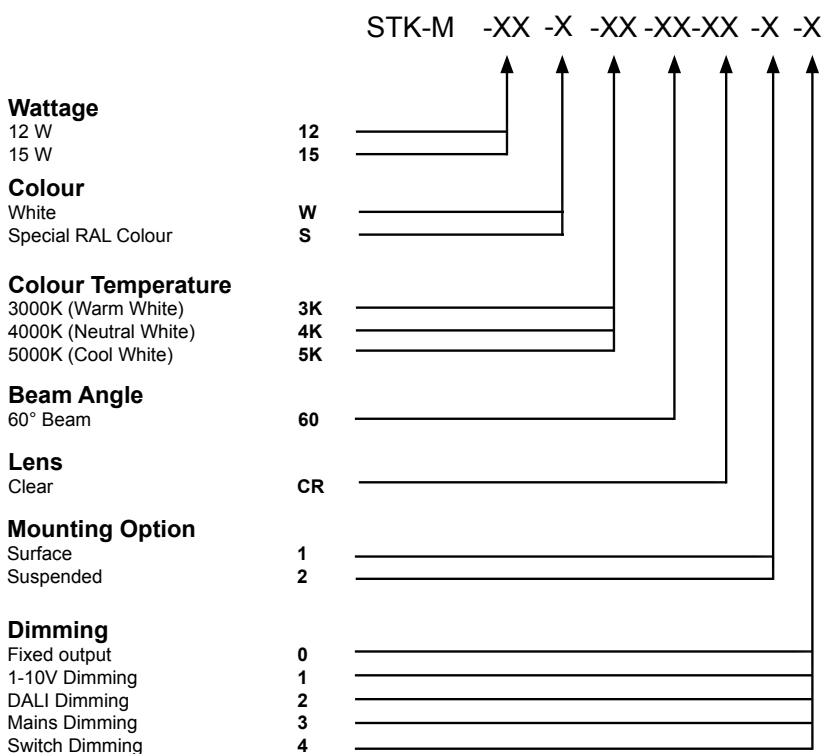
# STARK MINI CLEAR

- CREE LED Engine
- Cast Aluminium
- Instant on - no flicker
- Environmentally Friendly - No mercury or lead enters the environment
- No RF and electronic magnetic interference
- Over 50,000 hours life span



The Stark Mini LED is a 117mm diameter surface mounted downlight which uses a CREE LED engine. The heatsink is constructed from die-cast aluminium complete with aluminium rolled-formed body and reflector. The base plate uses three fixing points with a twist and lock action to secure the luminaire on the ceiling. The bezel has a deep recess detail creating a glare friendly cut-off which is also an aesthetically pleasing architectural detail.

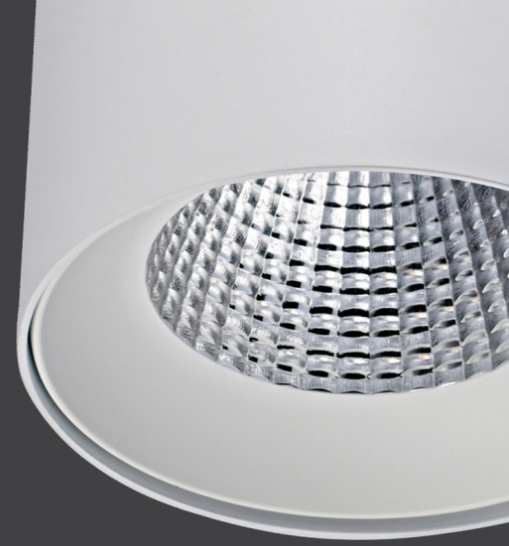
The Stark Mini is available in 900 and 1100 lumen outputs



## Example of Code:

STK-M-12-W-3K-60-CR-1-0

Wattage:	12 W
Colour:	White
Colour Temp.:	3000K
Beam Angle:	60°
Lens:	Frosted Diffuser
Mounting Option:	Surface
Emergency:	Not Required



Stark Mini Clear		
Power	12 W	15 W
Dimensions	Ø117 x 11mm	
Weight	0.62 kg	
Installation	Ceiling Surface Ceiling Suspended	
Voltage	220-240Vac	

Performance		
Power	12 W	15 W
Exit Lumens (lm)	1020 lm	1275 lm
Efficiency	85 lm/cW	76 lm/cW
Beam Angle	60°	
Colour Rendering	Ra>82	
Colour Temperature	3000K / 4000K / 5000K	
Dimming	1-10V Dimming DALI Dimming Mains Triac Dimmable	
Operating Temp.	-40°C to 50°C	
Warranty	5 Years	

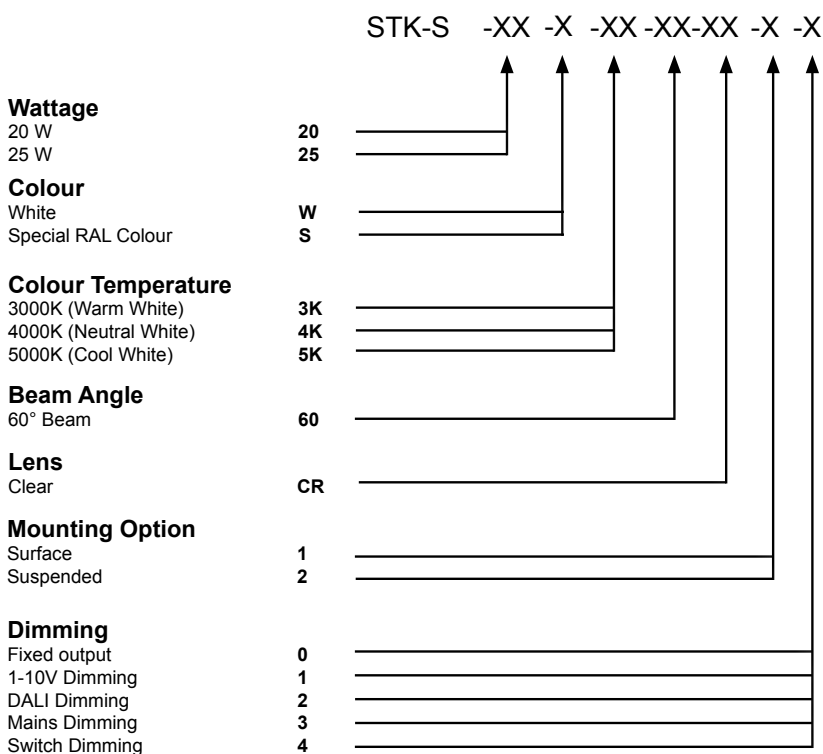
# STARK CLEAR

- CREE LED Engine
- Cast Aluminium
- Instant on - no flicker
- Environmentally Friendly - No mercury or lead enters the environment
- No RF and electronic magnetic interference
- Over 50,000 hours life span



The Stark LED is a 200mm diameter surface mounted downlight which uses a CREE LED engine. The heatsink is constructed from die-cast aluminium complete with aluminium rolled-formed body and reflector. The base plate uses three fixing points with a twist and lock action to secure the luminaire on the ceiling. The bezel has a deep recess detail creating a glare friendly cut-off which is also an aesthetically pleasing architectural detail.

The Stark is available in 1500lm and 1900lm outputs with a 60° beam angle.



### Example of Code:

STK-S-25-W-3K-60-CR-1-0

Wattage:	25 W
Colour:	White
Colour Temp.:	3000K
Beam Angle:	60°
Lens:	Clear
Mounting Option:	Surface
Emergency:	Not Required



Stark Clear		
Power	20 W	25 W
Dimensions	Ø200 x 139mm	
Weight	1.2 kg	
Installation	Ceiling Surface Ceiling Suspended	
Voltage	220-240Vac	

Performance		
Power	20 W	25 W
Exit Lumens (lm)	1,800 lm	2,250 lm
Efficiency	90.0 lm/cW	90.0 lm/cW
Beam Angle	60°	
Colour Rendering	Ra>82	
Colour Temperature	3000K / 4000K / 5000K	
Dimming	1-10V Dimming DALI Dimming Mains Triac Dimmable	
Operating Temp.	-40°C to 50°C	
Warranty	5 Years	

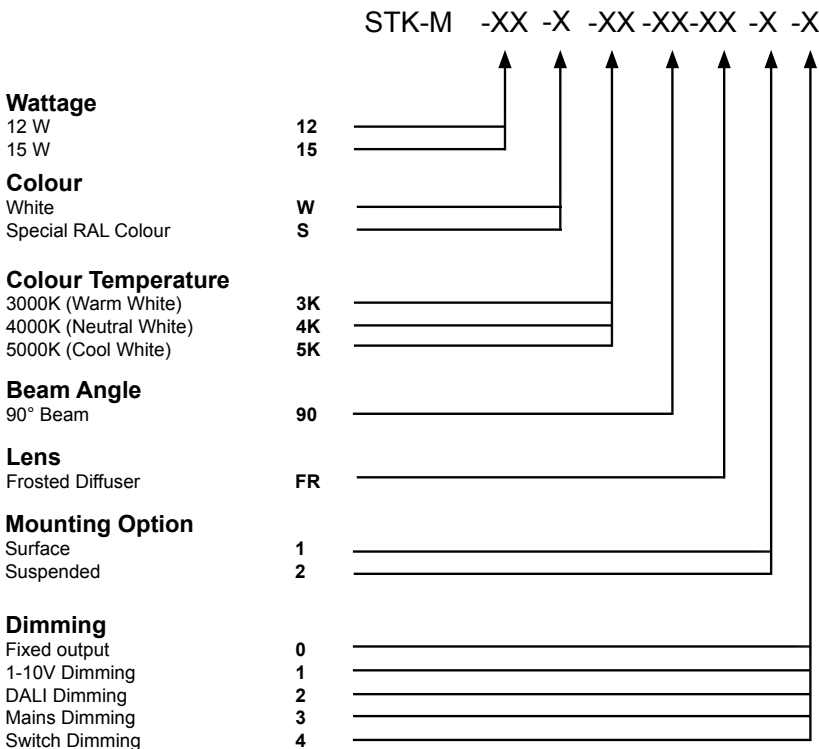
# STARK MINI FROSTED

- CREE LED Engine
- Cast Aluminium
- Instant on - no flicker
- Environmentally Friendly - No mercury or lead enters the environment
- No RF and electronic magnetic interference
- Over 50,000 hours life span



The Stark Mini LED is a 130mm diameter surface mounted downlight which uses a CREE LED engine. The heatsink is constructed from die-cast aluminium complete with aluminium rolled-formed body and reflector. The base plate uses three fixing points with a twist and lock action to secure the luminaire on the ceiling. The bezel has a deep recess detail creating a glare friendly cut-off which is also an aesthetically pleasing architectural detail.

The Stark Mini is available in 900 and 1100 lumen outputs with a 90° beam angle.



**Example of Code:**

STK-M-12-W-3K-90-FR-1-0

Wattage:	12 W
Colour:	White
Colour Temp.:	3000K
Beam Angle:	90°
Lens:	Frosted Diffuser
Mounting Option:	Surface
Emergency:	Not Required





Stark Mini Frosted		
Power	12 W	15 W
Dimensions	Ø130 x 100mm	
Weight	0.62 kg	
Installation	Ceiling Surface Ceiling Suspended	
Voltage	220-240Vac	

Performance		
Power	12 W	15 W
Exit Lumens (lm)	900 lm	1,200 lm
Efficiency	75.0 lm/cW	80.0 lm/cW
Beam Angle	90°	
Colour Rendering	Ra>82	
Colour Temperature	3000K / 4000K / 5000K	
Dimming	1-10V Dimming DALI Dimming Mains Triac Dimmable	
Operating Temp.	-40°C to 50°C	
Warranty	5 Years	

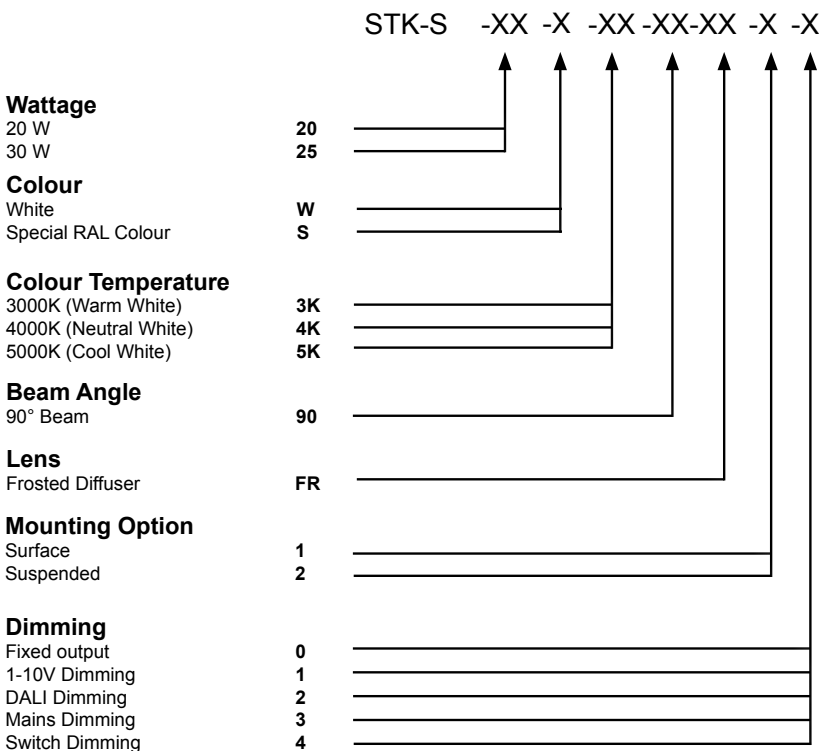
# STARK FROSTED

- CREE LED Engine
- Cast Aluminium
- Instant on - no flicker
- Environmentally Friendly - No mercury or lead enters the environment
- No RF and electronic magnetic interference
- Over 50,000 hours life span



The Stark is a 195mm diameter surface mounted downlight which uses a CREE LED engine. The heatsink is constructed from die-cast aluminium complete with aluminium rolled-formed body and reflector. The base plate uses three fixing points with a twist and lock action to secure the luminaire on the ceiling. The bezel has a deep recess detail creating a glare friendly cut-off which is also an aesthetically pleasing architectural detail.

The Stark is available in 1500lm and 2100lm outputs with a 90° beam angle.



### Example of Code:

STK-S-20-W-3K-90-FR-1-0

Wattage:	20 W
Colour:	White
Colour Temp.:	3000K
Beam Angle:	90°
Lens:	Frosted
Mounting Option:	Surface
Emergency:	Not Required



Stark Frosted		
Power	20 W	30 W
Dimensions	Ø195 x 130mm	
Weight	1.2 kg	
Installation	Ceiling Surface Ceiling Suspended	
Voltage	220-240Vac	

Performance		
Power	20 W	30 W
Exit Lumens (lm)	1,700 lm	2,400 lm
Efficiency	85.0 lm/cW	80.0 lm/cW
Beam Angle	90°	
Colour Rendering	Ra>82	
Colour Temperature	3000K / 4000K / 5000K	
Dimming	1-10V Dimming DALI Dimming Mains Triac Dimmable	
Operating Temp.	-40°C to 50°C	
Warranty	5 Years	

[sales@led.co.uk](mailto:sales@led.co.uk)  
[www.led.co.uk](http://www.led.co.uk)

LED.CO.UK